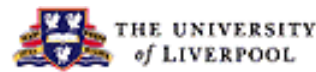


# IESR Metadata



Ann Apps  
MIMAS,  
The University of Manchester, UK



# Outline



- Purpose of JISC Information Environment Service Registry (IESR)
- IESR content description
- Types of technical services described
- Data supply and IESR content
- Metadata relatively stable (Version 2.3)

# Why IESR?

---



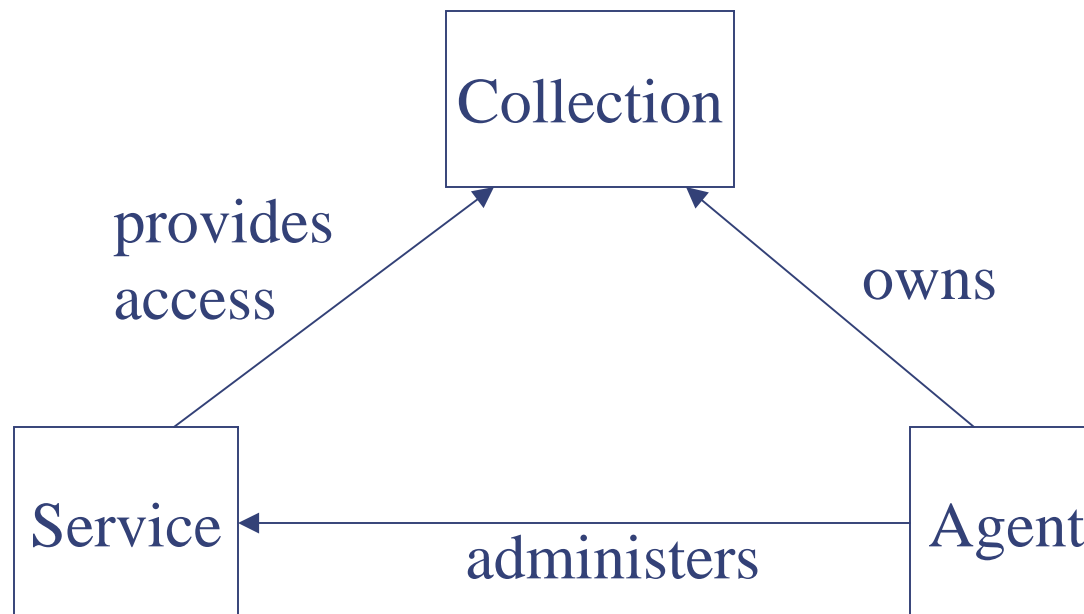
- JISC Information Environment:
  - Collections of resources for researchers, learners, teachers in UK
- Single central registry - m2m access
  - Improve awareness and access
- Funded by the JISC:
  - MIMAS, UKOLN, University of Liverpool
  - Prototype Registry developed at MIMAS

# IESR Content



- Descriptions of:
  - Collections of resources
  - Informational Services that provide access
  - Agents: Owners / Administrators
  - Transactional Services
- Supplied by resource providers
- Check by IESR content manager

# IESR Entities



# IESR Identifiers



- Every entity has a URI
- Assigned on registration in IESR
- Provide identification for resources in IE
- Links between entities in IESR
- PURL-based Object Identifier (POI)
- Example:

<http://purl.org/poi/iesr.ac.uk/105636559-25788>

# IESR Entity Description



- Entities described by metadata
- Based on open standards
- IESR terms defined in IESR namespace
- Metadata defined by Application Profile
  - Semantics
  - Occurrence
  - Searchable

# IESR Collection Metadata



- Based on RSLP Collection Description
- Simplification for electronic resources
- Consistent with DCMI Collection Description Application Profile
- Links to other entities:
  - hasService: IESR id (service)
  - Owner: IESR id (agent)

# Vocabulary Encoding Schemes




---





- Defined in Application Profile
- Single backbone subject scheme
  - Dewey
- Other common vocabularies supported
- `iesr:usesControlledList`
  - IESR defined list (extensible)
  - terminology service; item level search
- `dcterms:educationalLevel`: UK MEG list

File Edit View Favorites Tools Help

Back Forward Stop Refresh Home Search Favorites History Mail Print Edit Messenger

Address  C:\confs\pepc2004\psigate.html  Go  Link

IESR Type: Collection  
Title: PSigate  
Alternative Title: Physical Sciences Hub of the Resource Discovery Network  
Collection Id: <http://purl.org/doi/iesr.ac.uk/1084527297-21797>  
Coll Description: PSigate - the physical sciences hub of the Resource Discovery Network. PSigate is a free service that provides access to a searchable catalogue of high quality Internet-based resources in the physical sciences. The service is made up of a series of specialist subject gateways covering: astronomy, chemistry, earth sciences, materials sciences, physics and policy and history of science. Many additional services are provided including: Timelines, the Spotlight science magazine, plug-in bank, jobs and courses, current science news, and the ability to broaden searches via an internal search engine - the 'Web Catalogue'.  
Type: Catalogue.Internet.Text; Collection.Internet.Text  
Format: Collection of metadata records about web resources.  
Coll hasService: <http://purl.org/doi/iesr.ac.uk/1084526666-17399>; <http://purl.org/doi/iesr.ac.uk/1084526653-17319>;  
<http://purl.org/doi/iesr.ac.uk/1084526679-17485>  
Coll Copyright: Copyright. (c) PSigate  
Coll Use Rights: Catalogue descriptions may not be used without permission.  
Coll Licence: Freely available.  
Collection Logo: [http://www.psigate.ac.uk/newsite/main/psigatologo\\_small.gif](http://www.psigate.ac.uk/newsite/main/psigatologo_small.gif)  
Subject (DDC): 500; 501; 509; 520; 530; 540; 550; 620.11  
Subject (JACS): F100; F200; F300; F500; F600; F700; F820; F860; F900; H140; H340; H310; H440; J200; J300; J400; J500; V380; V550  
Contents Date: 2000-06/  
Coll Owner: <http://purl.org/doi/iesr.ac.uk/1084526488-15897>  
Coll isPartOf: <http://www.rdn.ac.uk/>  
hasPublication: <http://www.psigate.ac.uk/newsite/about.html>

 Done  Internet




# IESR Service Metadata



- More than RSLP CD 'locator'
- Bespoke IESR scheme, uses open standards
- Single access method:
  - Z39.50, SOAP, OAI-PMH, Web/CGI
- Location URL
- Interface property for some service types
- Administrator: IESR id (agent)

File Edit View Favorites Tools Help

Back Forward Stop Refresh Home Search Favorites History Mail Print Edit Messenger

Address  C:\confs\pepc2004\ahds.html  Go  Link

# JISC Information Environment Service Registry

## IESR Full Record


---




Displaying Record [1](#) of 1.



Search terms: [{anywhere=1088607166-14586}](#)

Service Title: Arts and Humanities Data Service  
Service Id: <http://purl.org/doi/iesr.ac.uk/1088607166-14586>  
Service Location: <http://www.ahds.ac.uk/development/xirepos/oai>  
Access Method: oai-pmh  
Access Control: none  
Service Standard: oai-pmh-2\_0  
Svc Administrator: <http://purl.org/doi/iesr.ac.uk/1088606945-12868>

---

SOME RIGHTS RESERVED  


All IESR records are licensed under a [Creative Commons Licence](#):  Attribution Required;  Non-Commercial;  Share-Alike.

 Done  Internet



File Edit View Favorites Tools Help



Address C:\confs\pepc2004\biosis.html

Search terms: [\[anywhere=1077197306-5288\]](#)

Agent: 1  
 Agent Name: EDINA  
 Agent Id: <http://purl.org/oid/iesr.ac.uk/1077197306-5288>  
 Agt Description: EDINA, based at Edinburgh University Data Library, is a JISC-funded national datacentre. It offers the UK tertiary education and research community networked access to a library of data, information and research resources. All EDINA services are available free of charge to members of UK tertiary education institutions for academic use, although institutional subscription and end-user registration are required for most services.  
 Agent Telephone: +441316503302  
 Agent email: [edina@ed.ac.uk](mailto:edina@ed.ac.uk)  
 Agent URL: <http://edina.ac.uk/>  
 Agent Logo: <http://edina.ac.uk/images/edinaplusminus.gif>



All IESR records are licensed under a [Creative Commons Licence](#): Attribution Required, Non-Commercial, Share-Alike.



# IESR Administrative Metadata

---



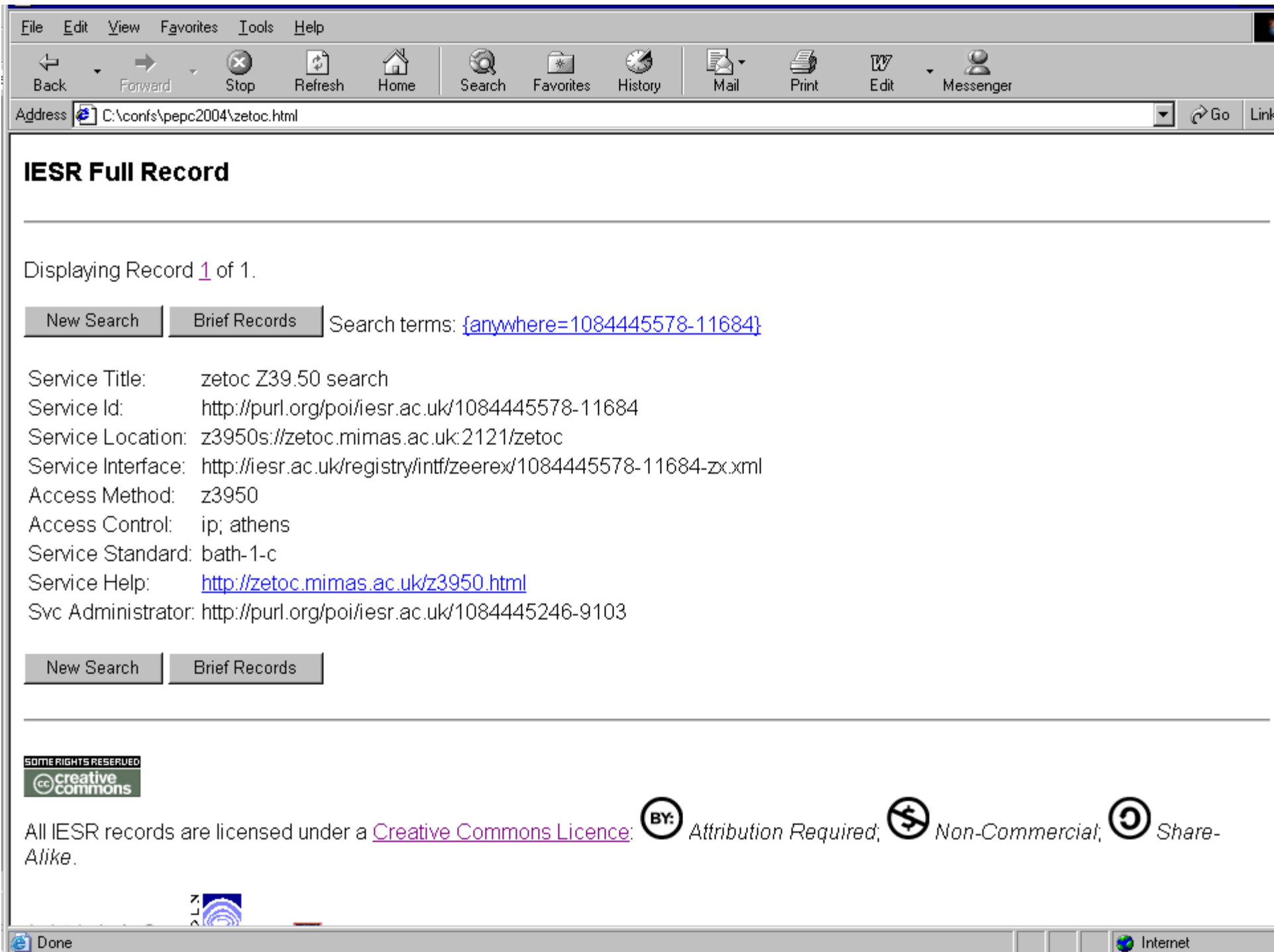
- Included with every entity
- Data suppliers can include:
  - creator / contributor, creation dates, source
- IESR includes:
  - creating organisation, publisher: IESR
  - latest modification date
  - rights to reuse descriptions

# IESR Creative Commons Licence

---



- All IESR records licensed under a Creative Commons licence:
  - Non-commercial (freely available)
  - Share-alike (maintain same licence)
  - Attribution-required (attribute provenance)
- Suppliers agree to this licence
- <http://creativecommons.org>



File Edit View Favorites Tools Help



Address C:\confs\pepc2004\zetoc.html Go Link

## IESR Full Record

---

Displaying Record [1](#) of 1.

Search terms: [{anywhere=1084445578-11684}](#)

Service Title: zetoc Z39.50 search  
Service Id: <http://purl.org/poi/iesr.ac.uk/1084445578-11684>  
Service Location: z3950s://zetoc.mimas.ac.uk:2121/zetoc  
Service Interface: <http://iesr.ac.uk/registry/intf/zeerex/1084445578-11684-zx.xml>  
Access Method: z3950  
Access Control: ip; athens  
Service Standard: bath-1-c  
Service Help: <http://zetoc.mimas.ac.uk/z3950.html>  
Svc Administrator: <http://purl.org/poi/iesr.ac.uk/1084445246-9103>



All IESR records are licensed under a [Creative Commons Licence](#): Attribution Required, Non-Commercial, Share-Alike.



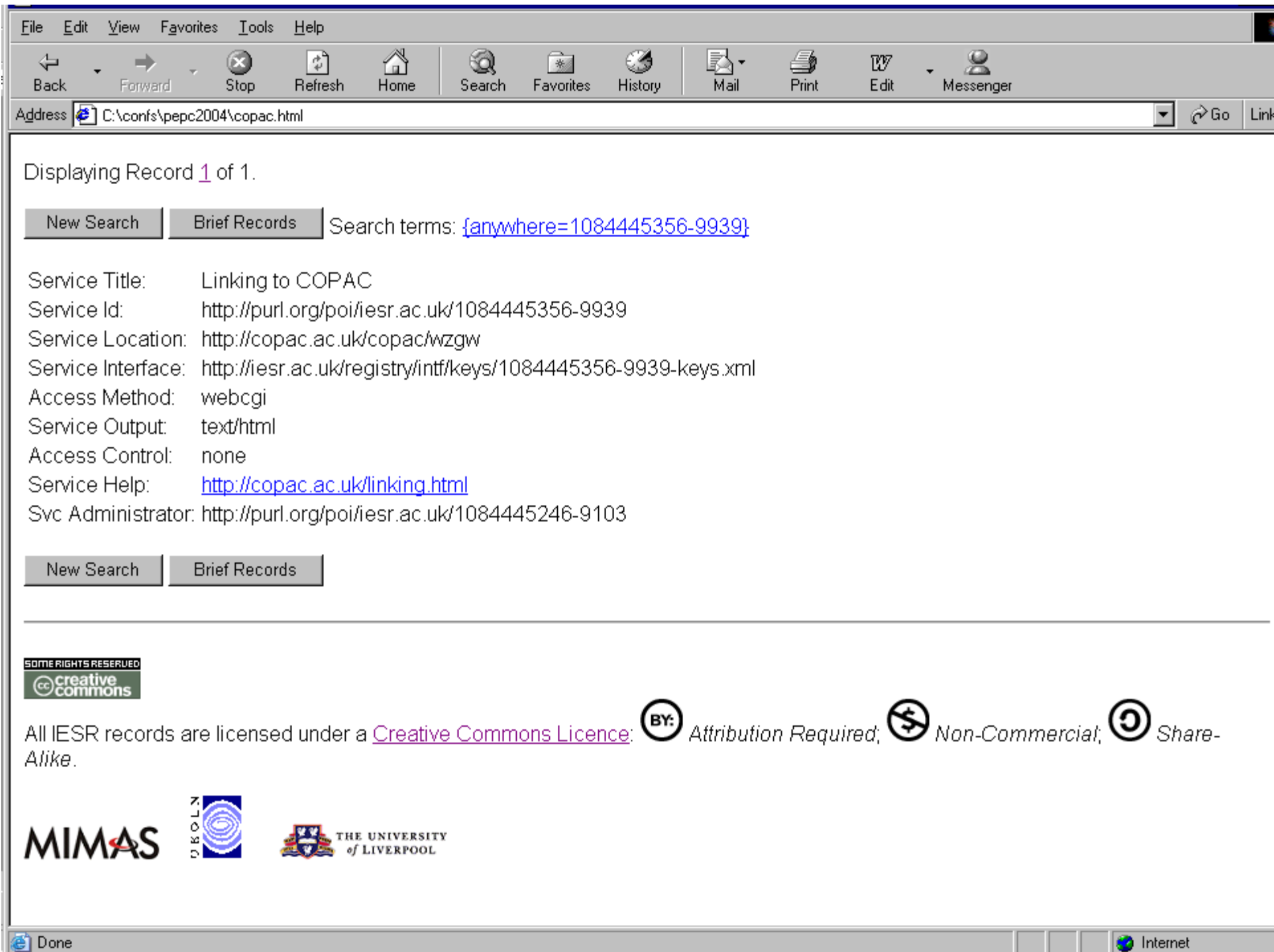
C:\confs\pepc2004\1084445578-11684-zx.xml - Microsoft Internet Explorer

File Edit View Favorites Tools Help

Back Forward Stop Refresh Home Search Favorites History Mail Print Edit Messenger

Address [C:\confs\pepc2004\1084445578-11684-zx.xml](http://C:\confs\pepc2004\1084445578-11684-zx.xml) Go

```
<?xml version="1.0" ?>
- <explain id="http://purl.org/poi/iesr.ac.uk/1084445578-11684">
- <serverInfo>
  <host>zetoc.mimas.ac.uk</host>
  <port>2121</port>
  <database>zetoc</database>
</serverInfo>
- <metaInfo>
  <dateModified>2003-06-24</dateModified>
</metaInfo>
- <indexInfo>
- <index>
  <title>Title</title>
  - <map>
    <attr type="1" attributeSet="1.2.840.10003.3.1">4</attr>
  </map>
</index>
- <index>
  <title>ISSN</title>
  - <map>
    <attr type="1" attributeSet="1.2.840.10003.3.1">8</attr>
  </map>
</index>
</indexInfo>
- <recordInfo>
- <recordSyntax oid="1.2.840.10003.5.101">
  <elementSet name="F" />
  <elementSet name="B" />
  - <elementSet name="REF">
    <title>Tagged Reference</title>
  </elementSet>
</recordSyntax>
</recordInfo>
</explain>
```



File Edit View Favorites Tools Help



Address C:\conf\s\pepc2004\copac.html

Displaying Record [1](#) of 1.

[New Search](#)

[Brief Records](#)

Search terms: [{anywhere=1084445356-9939}](#)

Service Title: Linking to COPAC  
Service Id: <http://purl.org/poi/iesr.ac.uk/1084445356-9939>  
Service Location: <http://copac.ac.uk/copac/wzgw>  
Service Interface: <http://iesr.ac.uk/registry/intf/keys/1084445356-9939-keys.xml>  
Access Method: webcgi  
Service Output: text/html  
Access Control: none  
Service Help: <http://copac.ac.uk/linking.html>  
Svc Administrator: <http://purl.org/poi/iesr.ac.uk/1084445246-9103>

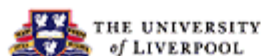
[New Search](#)

[Brief Records](#)

SOME RIGHTS RESERVED



All IESR records are licensed under a [Creative Commons Licence](#): Attribution Required; Non-Commercial; Share-Alike.



Done

Internet

C:\confs\pepc2004\1084445356-9939-keys.xml - Microsoft Internet Explorer

File Edit View Favorites Tools Help

Back Forward Stop Refresh Home Search Favorites History Mail Print Edit Messenger

Address <C:\confs\pepc2004\1084445356-9939-keys.xml> Go

```
<?xml version="1.0" ?>
- <iesrKeys xmlns:dc="http://purl.org/dc/elements/1.1/" xmlns:dcterms="http://purl.org/dc/terms/"
  xmlns:rslpcd="http://purl.org/rslp/terms#" xmlns:iesr="http://iesr.ac.uk/terms/"
  xmlns:iesrk="http://iesr.ac.uk/terms/keys/" xmlns="http://iesr.ac.uk" xmlns:xsi="http://www.w3.org/2001/XMLSchema-
  instance" xsi:schemaLocation="http://iesr.ac.uk http://iesr.ac.uk/profile/keys/iesr-keys.xsd">
  <dc:identifier xsi:type="dcterms:URI">http://purl.org/poi/iesr.ac.uk/1084445356-9939</dc:identifier>
  <rslpcd:locator xsi:type="dcterms:URI">http://copac.ac.uk/copac/wzgw</rslpcd:locator>
- <iesr:admeta>
  <dcterms:created xsi:type="dcterms:W3CDTF">2004-05-13</dcterms:created>
  <dc:rights xsi:type="dcterms:URI">http://creativecommons.org/licenses/by-nc-sa/1.0/</dc:rights>
</iesr:admeta>
- <iesrk:input>
- <iesrk:key>
  <iesrk:keyName>f</iesrk:keyName>
  <iesrk:keyValue>s</iesrk:keyValue>
  <iesrk:keyDescription>Tells the script to do a search</iesrk:keyDescription>
</iesrk:key>
- <iesrk:key>
  <iesrk:keyName>form</iesrk:keyName>
  <iesrk:keyValue>A%2FT</iesrk:keyValue>
  <iesrk:keyDescription>Author/Title search</iesrk:keyDescription>
</iesrk:key>
- <iesrk:key>
  <iesrk:keyName>ti</iesrk:keyName>
  <iesrk:keyDescription>Title</iesrk:keyDescription>
</iesrk:key>
</iesrk:input>
</iesrKeys>
```

Dr a

File Edit View Favorites Tools Help

Back Forward Stop Refresh Home Search Favorites History Mail Print Edit Messenger

Address <http://iesr.ac.uk/cgi-bin/iesrsrch?form=gen&sess=207&type=Search&anywhere=1084445332-9667> Go Link

Service Title: MIMAS LitLink Service  
Service Id: <http://purl.org/poi/iesr.ac.uk/1084445332-9667>  
Svc: This LitLink service is provided by MIMAS for use by the UK academic community, and also by users at Irish and Scandinavian institutions that subscribe to the CHEST CrossFire agreement.  
Description: Scandinavian institutions that subscribe to the CHEST CrossFire agreement.  
Service Location: <http://litlink.mimas.ac.uk/LitLink/servlet/LitLink?>  
Access: openurl  
Method:  
Service Type: OpenURL Resolver  
Service Output: text/html  
Access Control: athens; ip  
Service Standard: openurl-01  
Service Help: <http://litlink.mimas.ac.uk/>  
Svc Administrator: <http://purl.org/poi/iesr.ac.uk/1084445246-9103>

---

Agent: 1  
Agent Name: MIMAS  
Agent Id: <http://purl.org/poi/iesr.ac.uk/1084445246-9103>  
Agt Description: Service administrator  
Agent Telephone: +441612756109  
Agent email: info@mimas.ac.uk  
Agent URL: <http://www.mimas.ac.uk/>  
Agent Logo: [http://www.mimas.ac.uk/images/mimas/mimas\\_d2.gif](http://www.mimas.ac.uk/images/mimas/mimas_d2.gif)

New Search Brief Records

Done Internet

# Other Service types

---



- SOAP:
  - Locator: access URL
  - Interface: WSDL
- OAI-PMH:
  - Locator: BaseURL
  - Interrogate service (Identify) for details
- Web page: Locator: URL

# IESR Data Supply



- Descriptions provided as single entities
- Currently data provided using templates
  - XML
  - Excel
  - Entities correlated using local identifiers
- Web form data entry interface soon

# IESR Content



- Collections from main JISC IE data providers
- Collections: 258; Agents: 172
- Services: 305
  - OAI-PMH: 4; OpenURL: 2; RSS: 7
  - SOAP: 1; Z39.50: 20; WebCGI: 5
  - WebPage: 256

# IESR Metadata Details



Metadata: <http://www.iesr.ac.uk/metadata/>

Application Profile: <http://iesr.ac.uk/profile/>

IESR Metadata Terms: <http://iesr.ac.uk/terms/>

XML Schema (work in progress):

<http://iesr.ac.uk/profile/iesr.xsd>

Search IESR: <http://iesr.ac.uk/registry/>

Ann Apps: [ann.apps@manchester.ac.uk](mailto:ann.apps@manchester.ac.uk)